



Cerulean Arts

GALLERY • STUDIO

FALL 2008

Though the weather is still warm, we're looking ahead to the fall and are happy to bring you a great lineup of events. We hope to see you at the gallery soon!

– Mike & Tina



Anthony Cimabella

Cerulean Arts Turns Two!

It's hard to believe nearly two years has passed since we first opened our doors September 15, 2006! Our inaugural exhibition brought together co-proprietor Michael Kowbuz and his 1996 MFA class from The Pennsylvania Academy of the Fine Arts for a 10-year reunion exhibition. It was a perfect way to start our venture – with great

friends who are also a strong group of artists. Since then we've been thrilled to not only strengthen existing relationships but form new bonds with so many talented artists as well as our faithful supporters.

Help celebrate our 2nd anniversary by joining us September 5 from 5-9 pm for the opening reception of our group exhibition featuring all sixteen artists from our first two years!

Philly Fringe Festival 2008

Cerulean Arts is happy to be a venue for this year's Philly Fringe Festival. Flute player Mark Seidman, accompanied by percussionist Dante Bucci, brings you *Flutescapes* – an improvised feast for the ears!

Flute and percussion were the first instruments; they speak to our ancient connections with the environment. From pounding rhythms to floating flights of fancy, these virtuoso musicians will present combinations of sounds never heard before. The concerts will be recorded and released as a CD – be part of the experience of live music recording!

September 6, 7, 11 and 12, 7:30-8:30 pm
Tickets are \$10 – purchase at the door or in advance at www.livearts-fringe.org or by calling 215-413-1318.



Mark Seidman

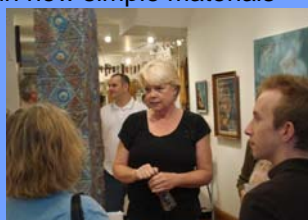


Dante Bucci

Threads in the Current Gallery Talk

Many thanks to Michelle Soslau for offering insight to the work in her current solo exhibition. Interested in how simple materials can be manipulated, combined and used, she discussed her many influences. From historical events to personal moments, both intentional and subconscious, Michelle's art reflects the world around us.

See *Threads in the Current* through August 29 or at www.ceruleanarts.com/exhibitions



Michelle Soslau

CALENDAR OF EVENTS

Friday, September 5 5-9 pm

Opening Reception
2nd Anniversary Exhibition
Continues thru October 17



Jeffery Tritt, Joshua Marsh, Binod Shrestha, Ron Wyffels, Ann Northrup, Jaime Treadwell, Lisa Hamilton, Tamar Miller, Sarah Steinwachs, Judith Jacobson, Anthony Ciambella, Richard Estell, Alexander Cheves, Sarah Roche, Kathranne Knight, Michelle Soslau

Saturday, September 6 Sunday, September 7 Thursday, September 11 Friday, September 12 7:30-8:30 pm

Philly Fringe Performance
Flutescapes
Mark Seidman & Dante Bucci

Saturday, September 20 1-4 pm

Meet the Artists from our
2nd Anniversary Exhibition

Saturday, September 27 3-6 pm

Philadelphia Etsy Team
Meet & Greet



Philadelphia Etsy Team

Cerulean Arts is excited to host a "Meet and Greet" for the Philadelphia Etsy Team on Saturday, September 27 from 3-6 pm. Etsy is an online marketplace for buying and selling all things handmade. But more than that, Etsy provides a community for members to share resources, participate in online workshops and learn helpful tips to be successful.

We're happy to have a few Etsy members showcase their work at Cerulean Arts and are always eager to help promote handmade decorative arts. For those interested in becoming Etsy members, the Meet and Greet is the perfect place to get started! For more information on Etsy, visit www.etsy.com and to learn more about the Philadelphia Etsy Team, visit their blog at phillyetsy.blogspot.com



Featured Decorative Artist – Molave Designs

In collaboration with artisans of the Philippines, Molave Designs presents a unique collection of home accessories that combine organic character

with modern sensibility. Created using natural materials indigenous to the Philippine Islands, pieces are thoughtfully crafted, reflecting the diverse styles and design heritage of the archipelago. The beauty of the land, melded by the culture and creativity of the Philippine people, bestow each piece with warmth and intrinsic elegance.

Among the beautiful pieces available at the gallery are red resin vases inlaid with twigs (above) and the stunning black resin footed platter and matching vase inlaid with a swirl of gugo wood and elephant grass (right).



Tina Rocha with Ann Northrup

Ann Northrup & the Mural Arts Program

We want to congratulate artist Ann Northrup on the recent completion of her new mural *The Heart of Kensington* at Kensington and Allegheny Avenues. Despite the heat and humidity, there was a fantastic turnout at the dedication which was held in conjunction with the annual K&A MarketFest. Encompassing the side of the Septa station, Ann depicts the neighborhood and its residents in her engaging

40' x 47' composition. Ann is already hard at work on her next mural on the side wall of Vetri Ristorante (Spruce between Juniper & 13th).

For those who missed Ann Northrup's solo exhibition *Landscapes at the Edge of the Pacific: Rediscovering a Forgotten Past*, you can view her work online at www.ceruleanarts.com/exhibitions-past.htm. We also look forward to showing her travelling exhibition *Confluence* next spring!



Mayor Nutter cuts the ribbon

**Friday, October 24
5- 9 pm**

Opening Reception

Yuri Makoveychuk

Continues thru November 28



**Friday, December 5
5-9 pm**

Opening Reception

Anne Canfield



**Sunday, December 7
2-6 pm**

Enjoy an afternoon of cheer at our 3rd Annual Holiday Party!

Cerulean Arts

Cultivating an appreciation for art by holding exhibitions, offering unique decorative and fine art for sale and providing art instruction for personal fulfillment.

New Gallery Hours:

(Beginning September 1st)

Wednesday – Friday 10 am – 6pm

Saturday & Sunday 12 pm – 6 pm

1355 RIDGE AVENUE

267-514-8647

www.ceruleanarts.com

